



Broadcast Devices, Inc.

***GPM-300 General Purpose Audio Matrix
*Digital/Analog Audio Switcher***

Operations Quick Start Guide

Broadcast Devices, Inc.

Tel. (914) 737-5032

Fax. (914) 736-6916

World Wide Web: www.Broadcast-Devices.com

Firmware Version 2.0.36 and higher

Rev E2. 07/22

***Option Dependent**

Table of Contents

I.	Basic Description	3
II.	GPM-300 Operational Description	3-5
III.	Remote Control Operation	6
IV.	Input Mode Selection Menu System	7-9
V.	Silence Sensor Interval Programming	10-11
VI.	GPM-300 Operational Modes	11-12
VII.	GPM-300 Auxiliary Programming Functions	13-14
VIII.	Audio I/O Connector Diagrams	15-16
IX.	Remote Control Connector Diagrams	17-22
XI.	GPM-300 Block Diagram	23
XII.	Frame Rate Conversion Switch Selection	24
XIII.	Specifications	25
XIV.	Warranty	26
	Ethernet Support Instruction Addendum	28

I. Basic Description

The GPM-300 - can be ordered for four or eight inputs. The inputs can be AES3 digital and/or analog depending on model. Please refer to the model designation chart below. It is also possible to configure the GPM-300 for composite baseband FM stereo input. See models GPM-300-9,10 for configuration possibilities.

GPM-300- 1, 4 - AES I/O

GPM-300- 2, 8 – AES I/O

GPM-300- 3, 4 - AES I/O, 4 L/R Input

GPM-300- 4, 4 – 4 L/R I/O

GPM-300- 5, 4 – AES I/O, 4 L/R I/O

GPM-300-6, 8 – AES I/O

GPM-300-7, 8 – L/R In, 4 – L/R Out

GPM-300-8, 8 – L/R I/O

GPM-300-9, 4 AES I/O, 4 Comp. I/O

GPM-300-10, 4 – Comp. I/O, 4 L/R I/O

Summary of Basic Switcher Functionality:

The GPM-300 General Purpose Matrix Switcher system provides up to 8 inputs which can be selected to any of 8 outputs.

Each input have A and B input memories which can be programmed from the front panel providing versatile “Switcher within a Switcher” functionality.

Remote Control Functionality:

Individual remote control of A/B input selection to each output via GPIO

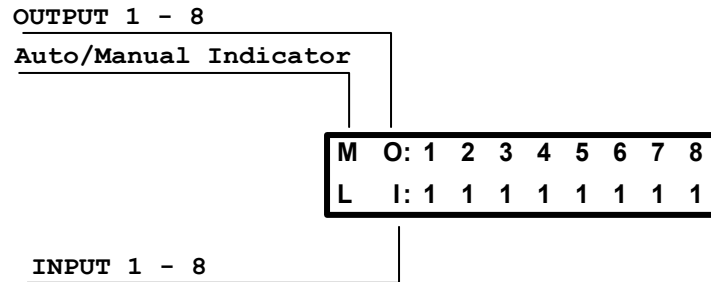
4 X 4/8 X 8 router functions from front panel or with the optional GPMRC Remote Control/RS485 serial interface panel provides simple remote pushbutton control of input routing to any output with status.

Audio Format I/O:

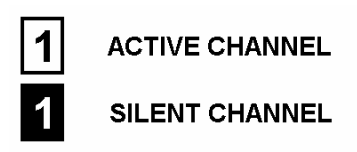
AES I/O, analog L/R I/O or hybrid versions available – provides format conversion in addition to switching functions

II. GPM-300 - Operational Description

When power is first applied to the GPM-300 after approximately 5 seconds the unit display should be as shown below. The top row indicates “Output” channel and the bottom row shows which “Input” channel is being fed to the output directly above.



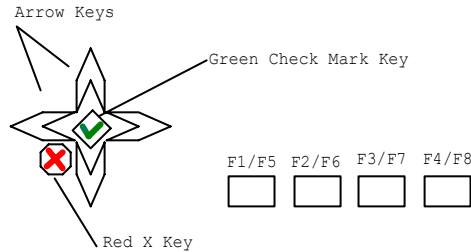
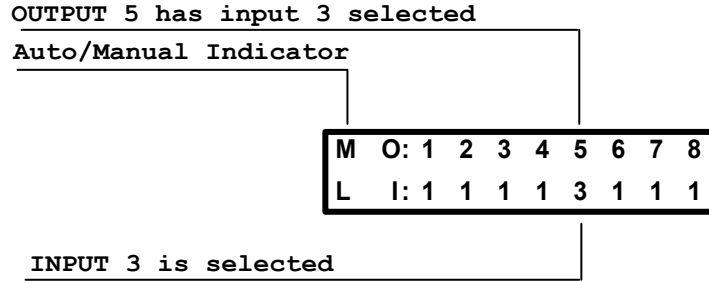
If no audio is being fed to the unit on any channel the numbers in the lower half of the display will be inverted indicating no audio present. After 5 seconds of audio application on a given channel above threshold the respective lower channel indicator will become un-inverted indicating audio present above the on the channel.



To select an input to an output review this example:

Suppose it is desired to route input #3 to output #5

1. If the unit is in Auto Mode place it in manual mode by pressing the F1/F5 button once. The letter M for manual operation will be displayed as the first character of the display row.
2. Select output #5 by moving the <> keys until the blinking cursor in the lower half of the display is under output #5.
3. Use the ^ v keys to select input #3
4. Once input #3 is selected press the Green Check Mark key to make the selection. Selection of the channel only happens after the Green Check Mark key is depressed. If not the cursor will continue to blink until the Green Check Mark key is pressed or the Red X key is pressed to cancel the selection. You can check to see if audio is present on a channel before actually switching to it by observing the input number condition as described above.



The GPM-300 has an additional feature whereby the user can assign a set of A/B inputs to each output thus creating a set of 4 or 8 A/B switchers in addition to being able to switch any input to any output. This additional feature was created for situations where a shared source amongst many outputs could be accommodated. Examples include EAS generator/receiver sharing, network feed sharing, or for simply providing a number of A/B switchers in one compact chassis. Cross point router operation is separate from the A/B channel selection function described below. Because the GPM-300 is a versatile switcher it can be used for different applications where different functionality is required.

Configuring the “A” and “B” channels to be selected by remote inputs:

To enter the A/B CONFIG MENU press the F2/F6 key. The display will switch as shown below:



Pressing the <> Keys selects the OUPUT for which the user would like to view in order to change the A/B channel selections for that output.

Pushing the F2/F6 Key will alternately select the A IN or B IN for modification. The currently selected field will blink to indicate which field is to be modified.

Pushing the ^ v keys will allow the user to alter which channel will be selected by the A and B levels of the channel select input pin for that respective output.

Here is an example to illustrate how this all works. Let us assume that it is desired that for OUTPUT #3 the user wants INPUT #2 to be the A input and INPUT # 3 to be the B input.

1. Select the A/B configuration menu by pressing F2/F6 if not already done.
2. Use the <> keys to navigate to OUTPUT #3 – Look at OUTPUT: indicator in upper Right Hand corner of display.
3. The A input indicator will indicate the present channel input selected and should be flashing. Use the ^ v keys to navigate to INPUT #2 which is desired in this example.
4. Press F2/F6 once to move the blinking cursor to the B IN: indicator. Use the ^ v keys to select the desired B input. In this example it is INPUT #3.
5. Review your settings and then exit the A/B CONFIG Menu by pressing F1/F5 once.

Once this action is performed for output #3, INPUT #2 will be selected when command A is selected from the GPIO remote for OUTPUT #3 and INPUT #3 will be selected when command B is selected remotely for OUTPUT #3.

Note: Settings are dynamic and are immediately stored in non-volatile memory. Be sure that settings are correct before exiting the A/B CONFIG Menu or moving to another output channel.

III. REMOTE CONTROLLED OPERATION

The GPM-300 provides rear panel parallel remote control to select between A/B inputs for each output and to enable/disable remote operation. Open collector status outputs are provided to indicate the currently selected input channel for each output channel. These outputs are capable of sinking up to 100ma and are rated at a maximum of 30v DC. The chart below shows which GPIO 1-2 outputs are assigned to which A/B inputs for a designated output channel.

GPIO 1							
GPO 1	GPO 2	GPO 3	GPO 4	GPO 5	GPO 6	GPO 7	GPO 8
OUTPUT 1		OUTPUT 2		OUTPUT 3		OUTPUT 4	
A	B	A	B	A	B	A	B

GPIO 2							
GPO 1	GPO 2	GPO 3	GPO 4	GPO 5	GPO 6	GPO 7	GPO 8
OUTPUT 5		OUTPUT 6		OUTPUT 7		OUTPUT 8	
A	B	A	B	A	B	A	B

Remote Channel Selection:

The GPM-300 provides 8 sets of A and B channel selection inputs and 8 channel status outputs on a pair of remote control DB-25 connectors. Each output channel (1-8) is controlled via its respective A/B channel select pin (GPI 1-8) and provides a status output (GPO 1-8) which reflects whether the A or B input channel for that output is currently selected. Each of the 8 outputs has a pair of status indicators to indicate whether that channel's respective "A" or "B" channel is selected. The status outputs of the GPM-300 are pulled up to 5 VDC and go low to indicate the status is active. Refer to section VI. Remote Control connections for further connection information.

Note: A common use of the GPM-300 is as a master A/B switcher for multiple inputs. This is particularly useful for AES audio applications as a maximum of two sets of 4 AES3 inputs can be selected to their respective outputs. This application provides one button remote control of all inputs by simply setting the input mode selections as follows:

(A) AES 1-4	(B) AES 5-8	Output
1	5	1
2	6	2
3	7	3
4	8	4
1	5	5
2	6	6
3	7	7
4	8	8

Programming the unit using the above chart allows all inputs to the AES 1-4 inputs to be "A" inputs and all inputs to the AES 5-8 inputs to be "B" inputs. To have one button control of all "A" and "B" inputs strap all A input select command lines and all B input select command lines together. Momentary connection to common of these lines will cause all A inputs to be selected together and all B inputs to be selected together.

IV. Input Mode Selection Menu Operation

The GPM-300 input pairs can be configured for mode of operation on an individual basis. Stereo, Mono Left, Mono Right, L+R and Stereo Swap can be configured from the front panel for both AES and analog inputs. Use mono left and mono right to fill in a missing channel. For example; choosing mono left will take a signal only input on the left channel and apply it to both channels at the output of the unit. Use L+R to create a monaural input from a stereo source.

```
INPUT MODE SELECTION
INPUT 1:    STEREO
```

To select the input mode press F4/F8 once. The display will indicate that you are in the INPUT MODE SELECTION menu as shown above. Select the input channel pair (1-8) using the ^ v keys. The <> arrow keys are then used to select between the following modes:

Stereo - Factory Default

LR Swap - L/R Channels Swapped

Mono L - L input fed to both L & R outputs

Mono R - R input fed to both L & R outputs

L + R - L & R inputs are summed and fed to both L & R outputs.

OFF – turns channel off – use this on unused channels

Here is an example to illustrate the procedure. Suppose a user decides that INPUT #4 should be L ONLY because a particular network feed is fed to only the left channel and it is desired to have the audio for this feed appear on both left and right outputs. To do this the GPM-300 Mono L function can be used to apply the left channel audio to both output channels by the following procedure:

1. Press F4 once to enter Input Mode Selection from Main Menu

```
INPUT MODE SELECTION
INPUT 1:    STEREO
```

2. Pressing the ^ v keys to select the input #4 channel to be changed:

```
INPUT MODE SELECTION
INPUT 4:    STEREO
```


- Pressing the <> arrow buttons until MONO L is displayed as shown below:

INPUT MODE SELECTION
INPUT 4: MONO L

- The input mode is dynamically saved when selected. To exit this menu press the F1 key to return to the main menu:

M O: 1 2 3 4 5 6 7 8
L I: 1 1 1 1 1 1 1 1

Phase Inversion Control

The GPM-300 allows the user to invert the phase (Tip/Ring Inversion) of any channel to correct for inadvertent phase inversion. To perform phase inversion:

- Press F4/F8 twice Input Invert Control from Main Menu – Phase Inversion:

INPUT INVERT CONTROL
INPUT 1: NORMAL

- Pressing the ^ v keys allows you to select the input channel to be changed:
- Pressing the <> keys allows selection of the following input modes:

Normal
Invert Left
Invert Right

Note: Phase inversion is Left or right but not both simultaneously.

Input Invert Control modes are dynamically saved when selected. To exit this menu press the F1 key to return to the main menu.

Input/Output Gain Control

Press F4 three times to enter Input Gain Control menu – from Main Menu

```
INPUT GAIN CONTROL
INPUT 1:  0 dB
```

Pressing the ^ v keys allows you to select the input channel to be changed:
Pressing the <> keys allows you to adjust gain in one dB increments +/- 10 dB

Press F4 four times and the display will indicate Output Gain Control

```
OUTPUT GAIN CONTROL
INPUT 1:  0 dB
```

Pushing the ^ v keys allows you to select the output channel to be changed:
Pushing the <> keys allows you to adjust gain in one dB increments +/- 10 dB

Factory default for input and output gain controls is 0 dB. When factory default gains are used AES3 I/O is unity. When AES3 inputs are output to an analog channel the analog output will correspond to –20 dB nominal below full scale of AES3 input or + 4dBm analog balanced output. Analog L/R inputs are designed to accept a +4 dBm nominal input which will produce + 4 dBm output to an analog output and – 20 dBfs for an AES3 output.

V. Silence Interval Programming

The GPM-300 has the ability to detect and switch upon silence from the active A or B input of each output.

```
AUDIO LOSS TIMEOUT
SECONDS = 60
```

Pressing the F3/F6 Key will allow programming the silence interval with the display as shown above. Select the desired interval using the ^ v keys. The interval can be set to any time between 10 and 600 seconds (Default = 60 seconds). Pushing the ENTER key will put this setting into non-volatile memory. Pushing the red X key will return to the original value before it was changed. NOTE: the ENTER key MUST be pushed to retain this setting after power is cycled. This allows the user to test a setting before committing it to memory.

Note about silence interval: Customers have requested as a little as 10 seconds as a silence interval and we have therefore provided this capability in the GPM-300. Be careful in choosing a short duration silence interval because it is often the case that while many program directors believe 10 seconds is an eternity it can be just a few too many steps back to the control room for the overnight guy out for a smoke. The overnight guy will never tell you he was out of the studio for a smoke that long but the silence sensor will keep him honest! Now that we have cleared the air on this here is the procedure:

Silence Threshold Programming

OUTPUT LVL = -20 dBFS SILENCE LVL = -55 dBFS

Pressing the F3/F6 Key twice from the main menu will allow programming of the silence threshold level. The upper line of the LCD indicates the level of the input currently routed to output #1 for comparison purposes. The lower line indicates the current threshold below which a channel will be considered INACTIVE. The relative level can be set to any time between -30 to -55dbFS (default= - 55dbFS) using the ^ v keys. Pushing the ENTER Green Check Mark key will put this setting into non-volatile memory. Pushing the Red X key will return to the original value before it was changed. NOTE: the ENTER Green Check Mark key MUST be pushed to retain this setting after power is cycled. This allows the user to test a setting before committing it to memory.

VI. GPM-300 Operational Modes

GPM-300 Auto Mode

Pushing the F1/F4 key will alternate between the manual and auto modes. In auto mode the display will indicate Outputs 1-8 on the top line and the currently selected channel for each of the eight outputs and its activity status. If audio is active on the selected channel the number will appear normally. If the channel goes silent for at least 5 seconds the number selected will invert to a black background indicating silence on the channel.

A	O:	1	2	3	4	5	6	7	8
L	I:	1	1	1	1	1	1	1	1

GPM-300 Auto Mode with Auto Return Feature

The GPM-300 silence sensor is an intelligent device in that it can not only detect silence and switch to an alternate channel it then has the ability to monitor the failed channel to determine audio restoration. In the “Auto Return” mode the GPM-300 can revert back to the primary channel if audio has been restored for a pre determined time interval.

By pressing the F3/F7 button three times from the main menu the display will be indicated as shown below.

AUTO RETURN FUNCTION
MINUTES = 1

To adjust the auto return time use the ^ v keys to adjust in increments of minutes from 1 to 60. The factory default setting is “Auto Return Disabled”. If auto return is not desired leave the unit in the AUTO RETURN DISABLED mode.

If auto return is activated and the unit placed in the auto mode, the display will indicate a + sign next to the A in the upper left hand corner of the screen indicating that the unit is in auto mode and auto return is activated. See the display figure below.

A+	O:	1	2	3	4	5	6	7	8
L	I:	1	1	1	1	1	1	1	1

GPM-300 Auto Mode With Auto Return Function Enabled Display

GPM-300 Manual Mode

The GPM-300 can be operated in the manual mode as a routing switcher as discussed earlier or as a multiple A/B switcher. In the manual mode channel navigation and switching can be performed from the front panel, GPIO rear panel interface, and serially by use of the optional GPMRC Remote Control Interface panel. The GPIO control is limited to selecting the pre programmed A/B inputs for each output. The front panel control and by use of the GPMRC panel allows 4 X 4/ 8 X 8 routing. The GPM-300 can also be controlled through an RS232 connection to the Sage Endec and Digital Alert Systems DASDEC EAS encoders. See pages 22 and 23 for ser up information. Note that as supplied by the factory the GPM series switchers are designed to be directly connected to the GPMRC Remote Control Interface Panel which utilizes RS485 communications. When connected to the rear panel “Serial” connector the interface will connect directly. If it is desired to use the GPM-300 for use with the Sage and Digital Alert Systems products the procedure outlined on page must be performed to convert

the rear panel “Serial” connector to RS232 communications.

M	O:	1	2	3	4	5	6	7	8
L	I:	1	1	1	1	3	1	1	1

GPM-300 Manual Mode Display

VII. GPM-300 Auxiliary Programming Functions

GPM-300 Audible Alarm

The GPM-300 has an audible alarm feature which can be programmed from the front panel. The Audible alarm will sound after a silence detection sequence has occurred. A sonalert within the unit will sound until the unit is reset either remotely or from the front panel. This feature can be turned on or off with the following procedure:

1. Enter AUDIBLE ALARM CONFIG screen by pressing F3/F7 four times from the main screen as shown below.



2. To disable the audible alarm use the v key to select “DISABLED”
3. To enable the audible alarm use the ^ key to select “ENABLED”

GPM-300 Auxiliary Alarm Relay Function and Remote Enable

The GPM-300 has two sets of form C contact relays available on the remote control enable/FLT reset connector. K1 is a maintained closure relay and K2 can be programmed to be maintained or momentary in its action. Both relays are activated by a silence alarm detection sequence. K1 is normally connected to a status input on a remote control system to indicate a fault has occurred. K2 can be used for this function in the maintained mode but can also be used as a remote start for an auxiliary audio source in case of failure of remote link audio. For example, a CD/DVD player or remote server can act as an auxiliary audio source and K2 programmed for momentary closure can be used to start such an auxiliary source connected to a GPM-300 input.

Factory default for K2 is MOMENTARY CLOSURE. To change this to MAINTAINED CLOSURE follow the procedure outlined below.

1. Enter the AUX RELAY CONFIG Menu by pressing the F3/F7 key 5 times from the main display screen as shown below

**AUX RELAY CONFIG
MOMENTARY CLOSURE**

2. Use the v key to change to MAINTAINED CLOSURE. The display will indicate the new relay configuration information as shown below.

**AUX RELAY CONFIG
MAINTAINED CLOSURE**

3. Remote enable is displayed as shown below and is accomplished by connecting pins 8 and 21 of the rear panel FLT ST/RC EN connector.

**A O: 1 2 3 4 5 6 7 8
R I: 1 2 3 4 5 6 7 8**

The R in the lower left hand corner indicates that the remote is enabled. Without this connection the GPIO remote control is disabled and the R is replaced by an L to indicate local control. The RS232 remote control is always enabled regardless of this connection.

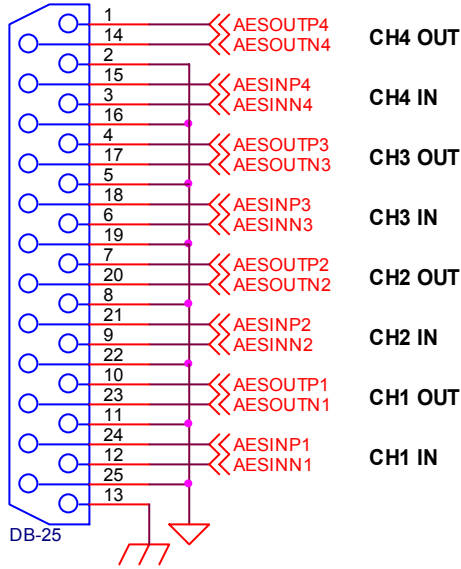
GPM-300 Factory Default Recovery

As with any programmable device, it is possible that the user would like to quickly return to the “factory default” settings. To return the GPM-300 to its factory configuration remove AC power to the unit. While holding the red “X” key, restore AC power until the display indicates “FACTORY DEFAULT”. The default condition is such that “A” and “B” inputs are 1 and 4 respectively.

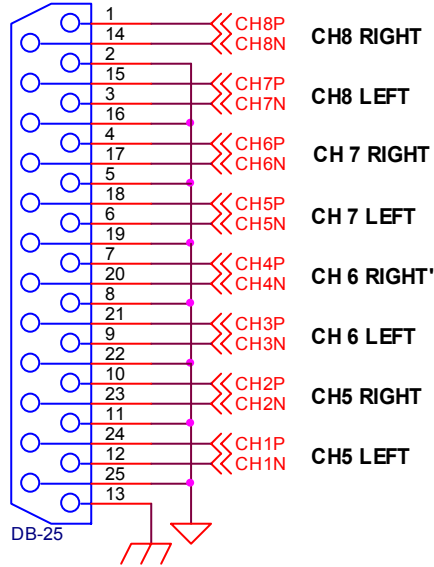
VIII. Audio I/O Connections

GPM-300 Audio Connections

DIGITAL AUDIO I/O



ANALOG AUDIO - INPUT & OUTPUT PINOUTS ARE IDENTICAL



GPM-300 AUDIO INPUT MAPPING DUAL DIGITAL VERSION

INPUT CHANNEL	TYPE	LOCATION
1	DIGITAL	AES 1
2	DIGITAL	AES 2
3	DIGITAL	AES 3
4	DIGITAL	AES 4
5	DIGITAL	AES 5
6	DIGITAL	AES 6
7	DIGITAL	AES 7
8	DIGITAL	AES 8

GPM-300 AUDIO INPUT MAPPING HYBRID ANALOG/DIGITAL VERSION

INPUT CHANNEL	TYPE	LOCATION
1	DIGITAL	AES 1
2	DIGITAL	AES 2
3	DIGITAL	AES 3
4	DIGITAL	AES 4
5	ANALOG	ANALOG IN 1-2 (L/R) Or Composite
6	ANALOG	ANALOG IN 3-4 (L/R) Or Composite
7	ANALOG	ANALOG IN 5-6 (L/R) Or Composite
8	ANALOG	ANALOG IN 7-8 (L/R) Composite

Note that GPM-300-9 units supplied with a composite I/O board take the place of the analog input/Output. So for example, inputs 5-8 are designated as composite input 1-4 on the DIP composite interface panel supplied with the unit. When a composite input is selected it appears as a buffered output on the respective composite output as well for loop through capability if desired to feed to an analog composite input to an FM exciter and/or STL transmitter. Of course a composite input can be routed to an AES3 output of the unit simultaneously.

IX. Remote Control Connections

GPM-300 Remote Connections

NOTE: IF AN INPUT OTHER THAN THE A/B CHANNEL IS SELECTED FROM THE FRONT PANEL NO STATUS OUTPUT WILL BE ACTIVE FOR THAT AUDIO OUTPUT CHANNEL.

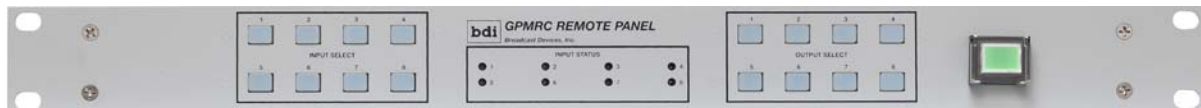


Notes:

1. Status outputs are open collector Darlington transistors capable of sinking 100ma @ 30v DC.
2. Select and remote inputs are momentary closures with internal 4.7K pull up resistors to 5v DC.
3. **For Remote Control Operation a connection between Remote Enable pin 8 and Remote Enable Common pin 21 must be made.**

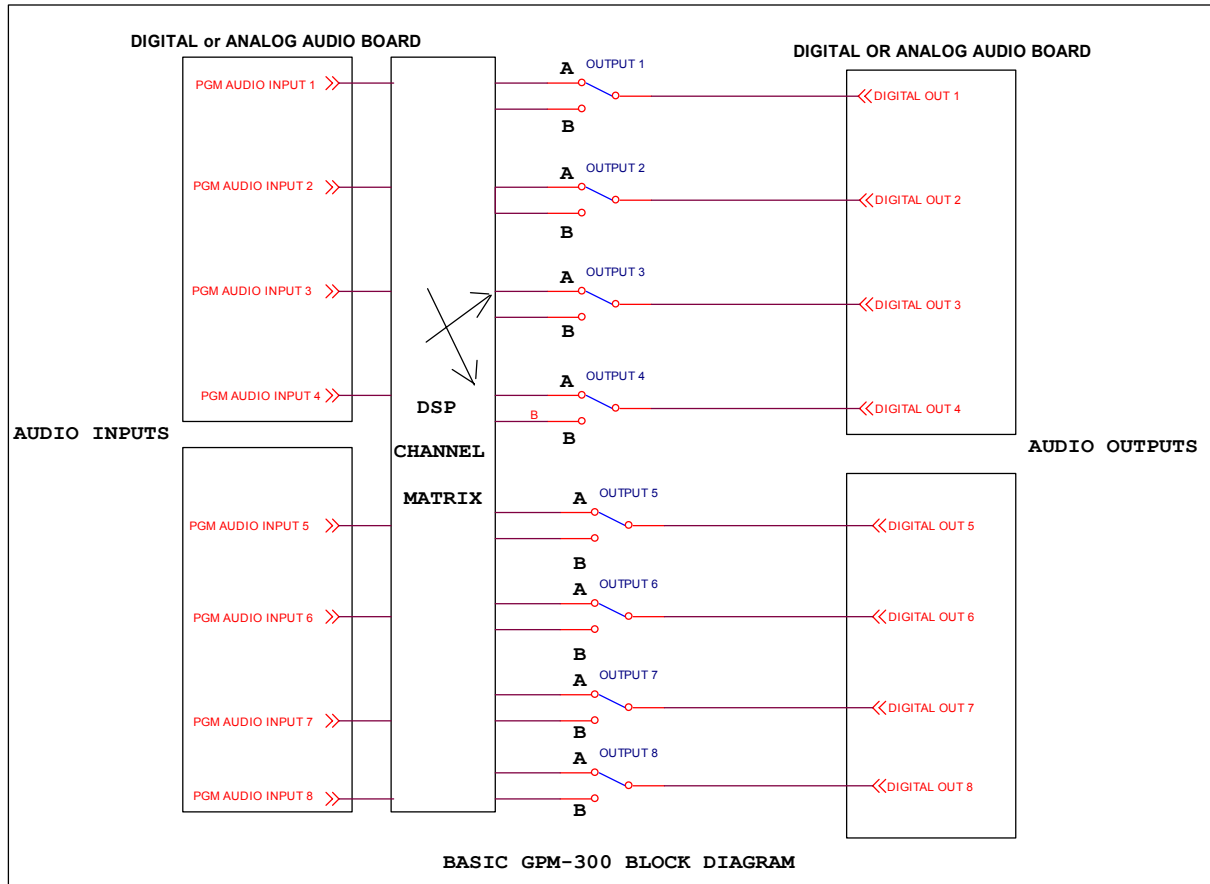
GPMRC Remote Control Interface

The GPM-300 series audio switchers can be interfaced to the optional GPMRC Remote Control interface panel. The GPMRC is a convenient remote control providing simple pushbutton selection of audio routing. In addition the panel provides complete status of channel selected for each output and audio presence status. The GPMRC uses 2 wire shielded RS-485 communications so that up to 6 GPMRC remote panels can be interconnected within a facility. This can provide a convenient audio router function for master control operations with remote panels in studios or other locations. As supplied from the factory the GPM-300 is configured to accept the interface of the GPMRC series panels on the rear panel DB9 GPM-300 rear panel connector. Fig. is provided to show proper configuration of the 10 position serial ribbon cable within the GPM-300. This diagram is provided because some GPM-300 may be configured for RS-232 communications which is covered in the next section. Refer to the GPMC Remote Control Interface Technical Reference Manual supplied with the optional GPMRC for installation instructions.



The GPMRC Remote Control Panel provides simple push button control of the GPM series audio switchers and status. Up to six GPMRC Remote Control Panels can be connected to a single GPM-300 series switcher using 2 wire shielded cable intra-facility.

XI. Basic Block Diagram of GPM-300



When the A/B inputs are programmed for each output the GPM-300 can be used as shared source selector or for individual output A/B configurations as desired. For example an input can be designated as a common source used by up to 8 destinations such as a network feed or EAS generator output for multiple studios. To accomplish this set the B inputs for the desired outputs to be all the same such as CH 8. Then set the individual A inputs for the normal feed for that output. Then on an output by output basis each destination has quick access to the common feed. This type of setup is used quite frequently for EAS or emergency feed types of operation where all destinations need to be able to quickly share a source such as during an EAS alert or a network feed for an important news story, etc.

If each destination requires access to all of the GPM-300 inputs then the GPMRC remote control panel is recommended whereby any input is accessible to any output if a

GPMRC panel is located at the destination such as a control room/back up control room. See page 18 GPMRC remote control interface instructions for more information.

XII. Frame Rate Conversion Switch Selection - S/N Prior to 0175

The GPM-300 has active frame rate conversion on all AES3 digital inputs. The unit can accept sample rates from 8 KHz to 96 KHz. The frame rate converter then up or down converts the sample rate to the selected sample rate. The GPM-300 is capable of outputting 32, 44.1 or 48 KHz sample rates. The factory default sample rate is 44.1 KHz. To change the sample rate to either 32 or 48 KHz refer to the diagram below. The sample rate converters are located on the AES I/O board. Locate S1 and change SR0, SR1 according to the chart below. Do not adjust any other DIP switch setting as this will result in incorrect operation of the GPM-300. Correct DIP switch settings are provided for convenience.

BOARD	SWITCHES "ON" = X							
	1	2	3	4	5	6	7	8
DSP	X		X	X				
AES I/O	X	X	X		X		X	
ANALOG AUDIO INPUT	X			X		X	X	
ANALOG AUDIO OUTPUT	X	X	X	X	X	X	X	X
GPIO 1								
GPIO 2 -GPM/DAB Versions		X						
AES I/O - 2 for 8 CH Ver.	X	X	X				X	

7 8	7 8	7 8
<input type="checkbox"/> <input type="checkbox"/>	<input type="checkbox"/> <input checked="" type="checkbox"/>	<input checked="" type="checkbox"/> <input checked="" type="checkbox"/>
S/R S/R	S/R S/R	S/R S/R
O/R	32KHz	48KHz

IsqC A0	IsqC A1	IsqC A2	INTERRUPT	M/S	TDM SEL	44.1KHz	S/R
---------	---------	---------	-----------	-----	---------	---------	-----

DIP SWITCH SETTING FOR GPM-300 SERIES SWITCHERS for S/N > 0174

From the factory the default sample rate of the GPM-300 is 44.1 KHz. To change the sample rate of units with S/N greater than 0174 remove the cover and locate the DSP board which is in the center of the unit. Locate DIP SWS2 and make changes as follows:

- 44.1 KHz S2-2 OFF S2-1 OFF
- 48 KHz S2-2 ON S2-1 OFF
- 32 KHz S2-2 OFF S2-1 ON

XIII. Specifications

Number of Inputs	4 or 8 by configuration
Number of Outputs	4 or 8 by configuration
Audio Formats	AES3, analog L/R, composite base band – configuration dependent
Input Sample Rates:	8-96 KHz
Output Sample Rates:	32, 44.1 or 48 KHz – user configurable
Input Analog Specifications:	+ 4 dBm nominal, + 24 dBm maximum input
Output Analog Specifications:	+ 4 dBm nominal, + 18 dBm maximum output
Analog Frequency Response:	+/- 0.25 dB from 20 Hertz to 20 KHz
Analog THD:	less than 0.1% Total Harmonic Distortion at headroom level
Base Band FM Stereo Input Level:	3.5 V Peak to Peak for 100% FM Modulation
Base Band FM Stereo Output Level:	3.5 V Peak to Peak for 100% FM Modulation
Base Band FM Stereo Frequency Response:	+/- 0.05 dBm 10 Hertz to 53 KHz

XIV. Warranty

Broadcast Devices, Inc. products are warranted against failure due to faulty materials or workmanship for a period of one year from the date of shipment to the ultimate user. The warranty covers repair or replacement of defective parts at the factory, provided the unit has been returned prepaid by the user. All shipments to the factory shall have affixed to the outside of the container a return authorization number obtained from the factory. The above warranty is void if the unit has been modified by the user outside of any recommendations from the factory or if the unit has been abused or operated outside of its electrical or environmental specifications. If customer conducted field tests suggest that the unit may be faulty, whether or not the unit is in warranty, a full report of the difficulty should be sent to Broadcast Devices, Inc. factory. The office may suggest further tests or authorize return for factory evaluation.

Units sent to the factory should be well packed and shipped to Broadcast Devices, Inc. factory location found on the BDI website www.broadcast-devices.com. Remember to affix the R.A. number to the outside of the carton. Any packages received without such R.A. number will be refused. Note: freight collect shipments will also be refused. When the unit has been received, inspected and tested, the customer will receive a report of the findings along with a quotation for recommended repairs, which are found falling outside of the standard warranty. Units returned for in-warranty repairs, which are found not to be defective will be subject to an evaluation and handling charge. In-warranty units will be repaired at no charge and returned via prepaid freight.

Out-of-warranty units needing repair require a purchase order and will be invoiced for parts, labor, and shipping charges.

When ordering replacement part, always specify A) Part Description, and Quantity; B) Date of Purchase, Where Purchased; C) Any Special Shipping Instructions. Always specify a street address, as shipping companies cannot deliver to a postal box.

Broadcast Devices, Inc. is not responsible for any other manufacturer's warranty on original equipment. Nor are we responsible for any failure, damage, or loss of property that may occur due to the installation or operation of our equipment outside of recommended specifications.

Broadcast Devices, Inc. reserves the right to change materials, specifications, and features from time to time.

www.broadcast-devices.com

Broadcast Devices, Inc.

Email: Customer.Service@broadcast-devices.com

(914) 737-5032 Tel. (914) 736-6916 Fax.

FCC Compliance Statement:

This device complies with Part 15 of the FCC Rules. Operation is subject to the following two conditions: (1) this device may not cause harmful interference, and (2) this device must accept any interference received, including interference that may cause undesired operation.

GPM-300 Web Setup Addendum Including SNMP Support

Introduction

The GPM-300 series audio switchers from BDI are now equipped with web access and SNMP v2 support. This addendum will describe access to the GPM-300 web site for initial setup and for use of the BDI Stack Graphical User Interface (GUI) for monitor and control. SNMP v2 support is provided with a MIB for use with remote control systems and third party software.

Initial Web setup

It is always best to start with a laptop computer directly connected to the GPM-300 LAN port for access to the web site. Use a standard Ethernet cable. The default IP address for your unit is:

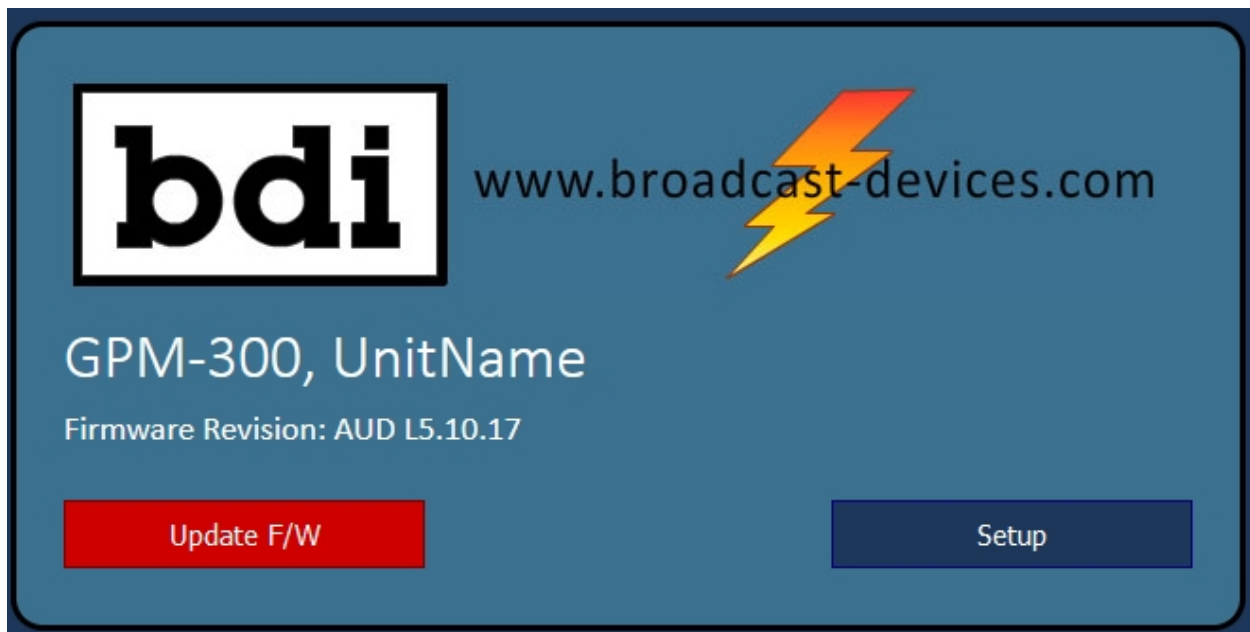
192.168.1.150

Port: 161

Username: username – all lower case

Password: password - all lower case

1. Access the web site Power cycle the unit first and within five minutes type the default IP address into a browser. If you wait too long the unit will time out preventing access to the web site. If this happens simply power cycle the unit again.



2. Press setup. DO NOT PRESS UPDATE! Doing so will do no harm but you will lose access to the unit and the unit will need to be power cycled. This button is only used for updates in firmware provided by the factory.

- Once you have avoided the temptation to press the big RED button and have pressed the setup button the following screen will appear:

bdi www.broadcast-devices.com

GPM-300 Setup

Firmware Revision: AUD L5.10.17, MAC: 60:8A:10:72:24:96

Unit Name	User Name	Password
UnitName	username	password
SNMP Read Community	SNMP Write Community	SNMP Port
public	private	161
IP Address	IP Mask	Default Gateway
192.168.1.150	255.255.255.0	192.168.1.1
DNS		
192.168.1.1		

Save

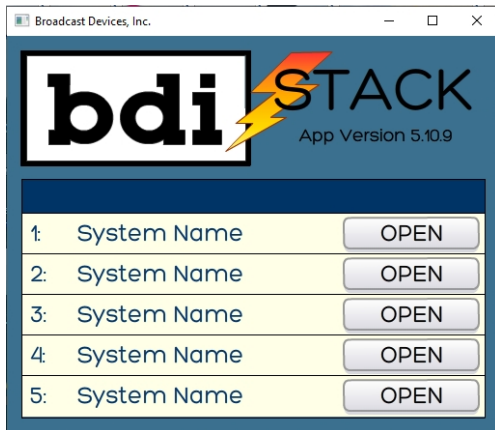
- Make the desired changes AND TAKE A SCREEN SHOT OF THE CHANGES BEFORE HITTING SAVE!
- Once all of the changes have been made and saved YOU MUST POWER CYCLE THE UNIT. Remove power for at least 5 seconds and restore power.
- Once you are certain you have made your changes and saved the username and password along with the new IP address, you did write these down or take a screen shot right? Well, if you have done so you can now download the BDI Stack APP from our web site. The accompanying QR Code below will help you locate it.



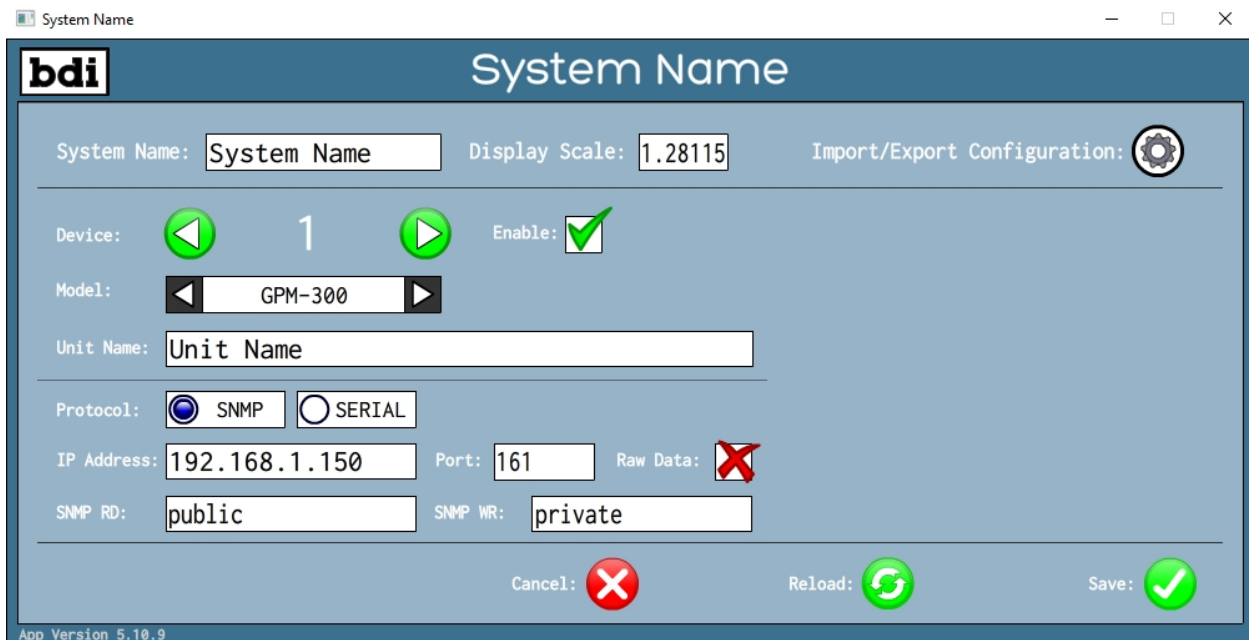
<http://gofile.me/4Gmwr/PWHJmHoF9>

BDI Stack Installation and setup:

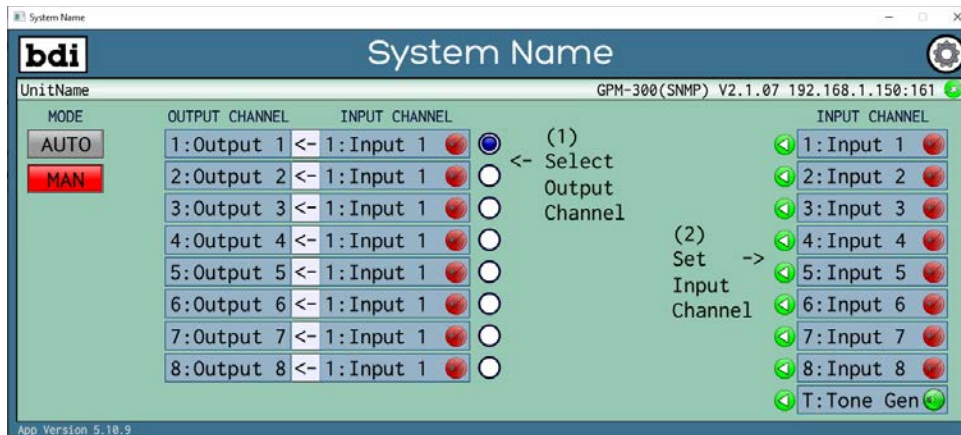
1. Once you have downloaded the BDI Stack GUI and unzipped it open the BDI APP folder and click on the executable file to open the BDI Stack GUI you will see the following screen and you can have up to 5 different BDI products set up via the GUI. First time users use the first system by pressing OPEN.



2. Once opened the screen will be rather blank so click on the gear icon in the upper right hand corner to set up the GPM-300:



3. Select a device, then a model GPM-300 in this case, give it a Unit Name if you like, use SNMP Protocol, enter the saved IP address and port. Once all of this is done click on the Enable Icon and then hit Save.
4. Once you hit save you will be in the operating screen for the GPM-300:



Follow the simple 2 step instructions to select an input channel to a particular output channel.

SNMP v2 Support

The GPM-300 series audio switchers can be controlled and monitored via SNMP v2. You can download the MIB for this product at the link below:



<https://broadcast-devices.com/BDI-AUDIOSWITCHER-MIB.zip>

Load the MIB into the remote control or software package to be used and you will have access to the GPM-300 via your remote control system.

For access to the BDI support page on our web site:



<https://broadcast-devices.com/support-html/>

